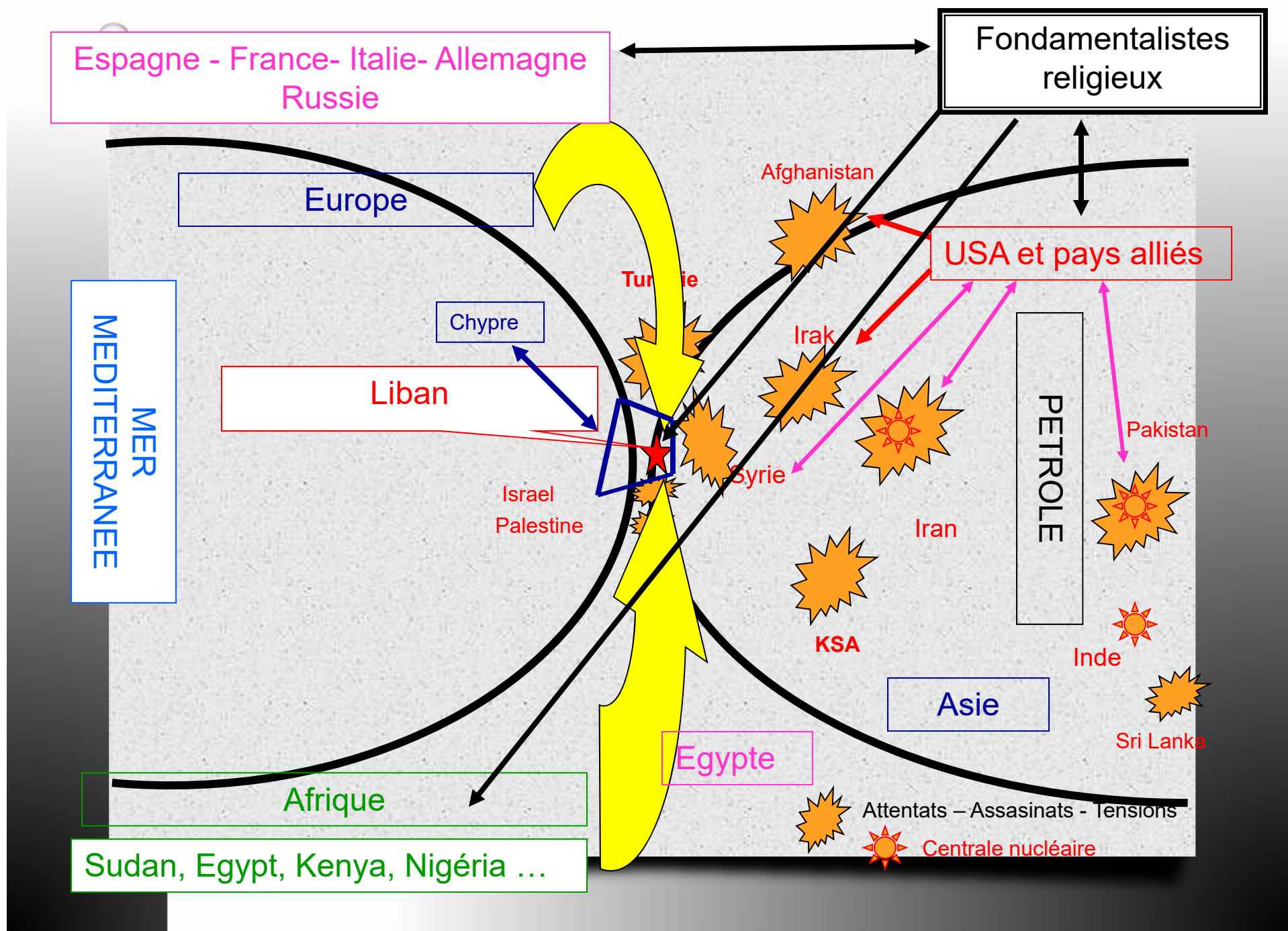


**Rotary Opens Opportunities**



# BEIRUT DISASTER RELIEF

***Presented by Head of Lebanon Country Fund  
PDG Michel Jazzar***



# Outline

- o The Beirut Explosion – is it the whole story?
- o Pre-Explosion Timeline
- o Effects on Lebanon
- o Explosion Effects
- o Our Rotary Response Action Plan
- o How you can help?



1

### 2018 -2019

- Public Debt :89BN
- Failures of the Gov. to provide basic needs such as electricity, water and sanitation



2

- Unemployment rate reached to 40%
- Endemic Corruption in the Public Sector



### **REVOLUTION, 17 October 2019.**

- Banks closed for 2 weeks
- Money Devalued
- Interest on some bank loans reached 24%
- Banks reopened and declared they had no more US Dollars to return to depositors

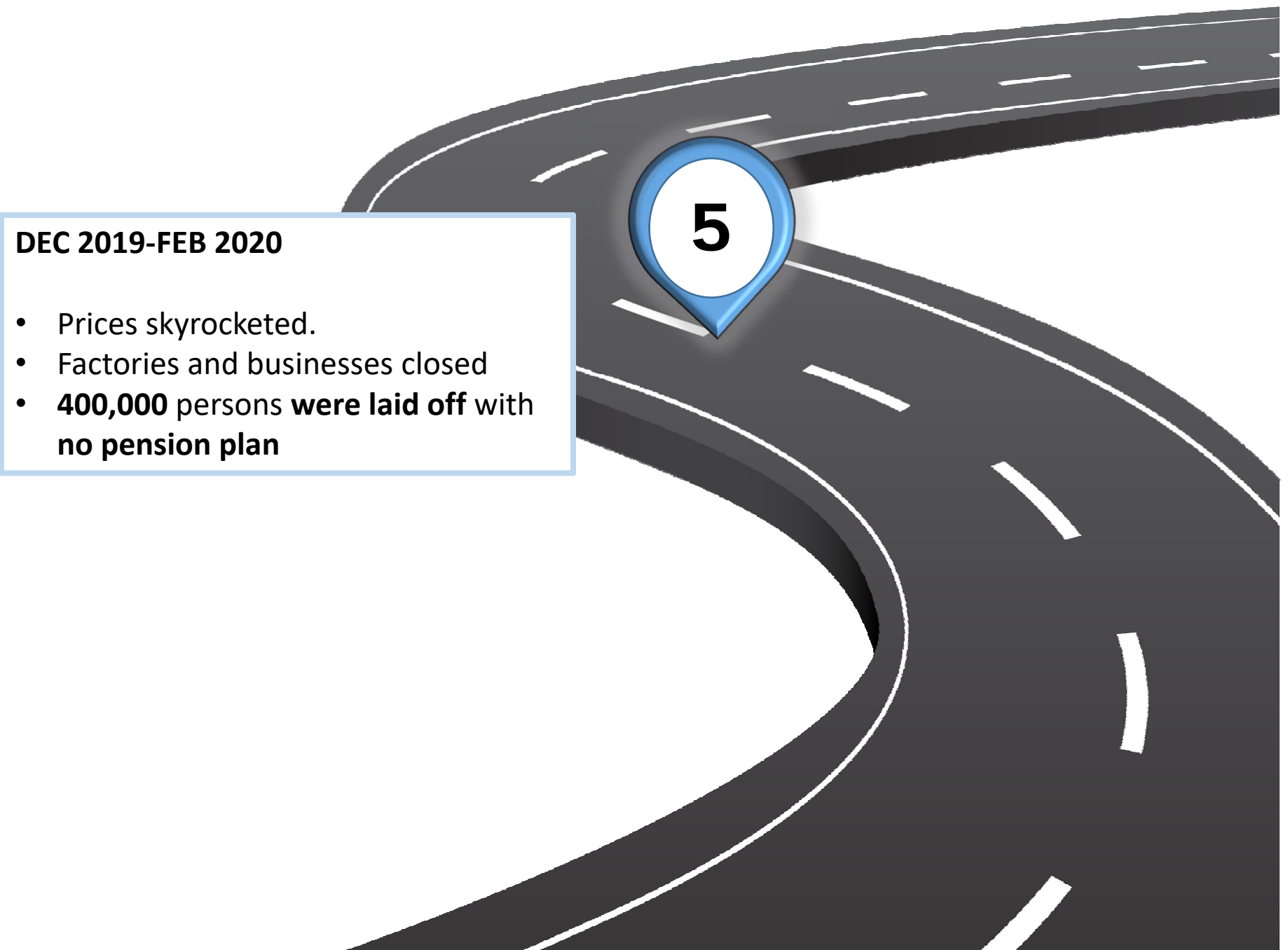
3

A stylized illustration of a dark grey road with white dashed lines, curving from the top left towards the bottom right. A blue location pin with a white circle in the center is placed on the road, containing the number '4'.

4

#### DECEMBER 2019

- 50% of the population became under the poverty level.
- The minimum monthly salary equivalent to **\$400** was now worth **\$70**.
- Everyone's bank savings was stuck in the banks but one could take it **at 20% of its value**.

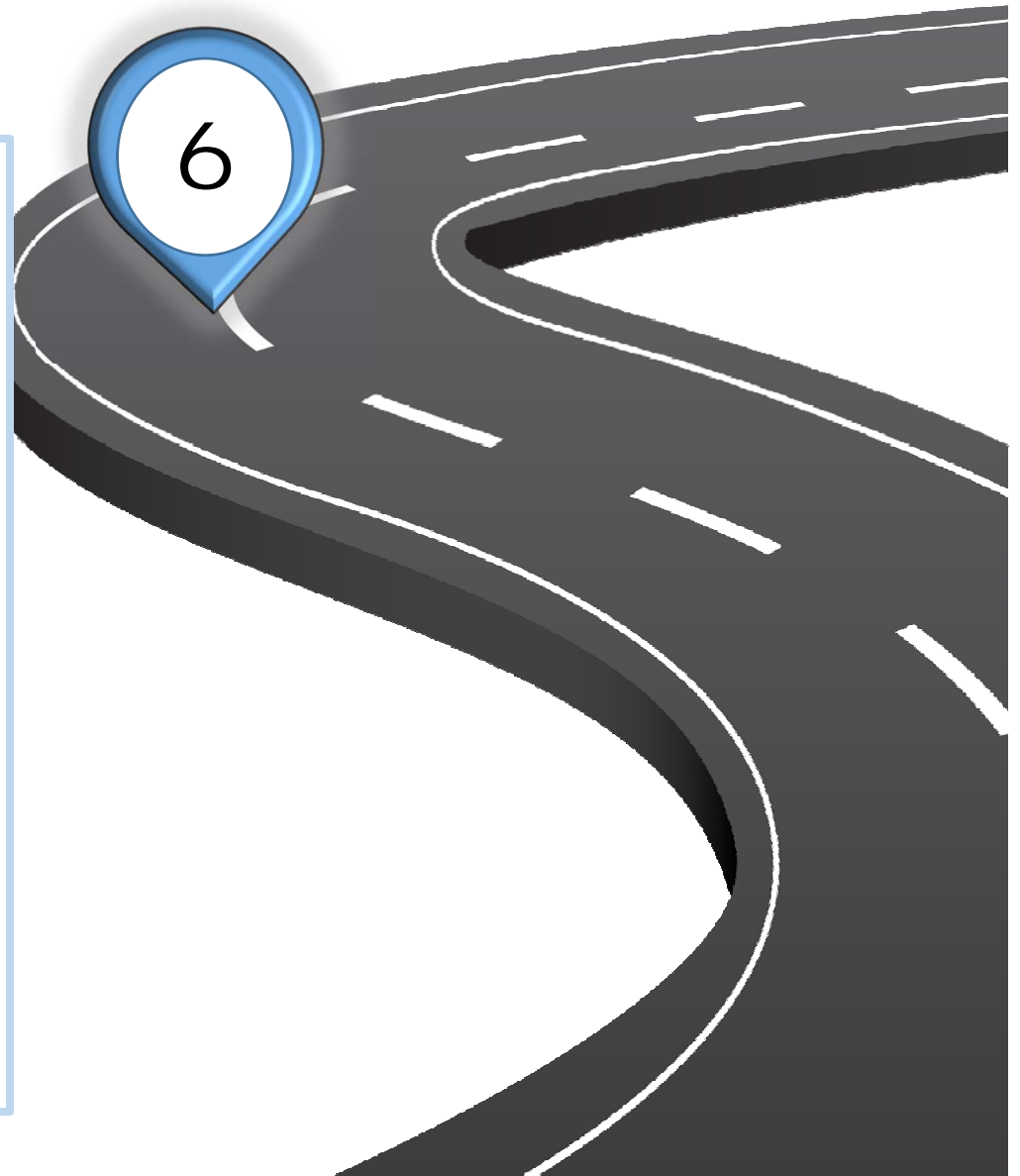


**DEC 2019-FEB 2020**

- Prices skyrocketed.
- Factories and businesses closed
- **400,000** persons **were laid off** with **no pension plan**

**March 2020**  
**THE CORONAVIRUS**

- Medical Equipment companies facing problems transferring money outside Leb to buy the necessary basic products,**
- Gov. not paying its debt to the hospitals: public and private,**
- Lockdown fed the economical/production crisis even more**



### March-July 2020

- Hunger started to reach more and more people
- Rotary Clubs responded through the Food Box project with LFB**
- Need for Medicine increased**
- Medical Equipment companies cant transfer money outside Leb**
- Gov. not paying their debts to the hospitals**
- Lebanon can't handle COVID 19 CASES..AND THEN**



04 AUGUST 2020 – 6:07PM

### **EXPLOSION**

- **Death of 160 people**
- **5000+ injured**
- **16 people still not found**
- **400,000 families displaced**
- **Our main harbor for all incoming shipments gone in ~75% and will cost like 2BN.**
- **Building, companies and residences destroyed cost is like 9 Billion \$ to get reconstructed**



# Rotary - Beirut Disaster Relief [Identity]

## Logo

- Phoenix + Olive branch
- Lebanon Flag

## Slogan

- **Together We Rise**
- 1<sup>st</sup> 2 words of RI vision
- Rotary wheel
- Rotary clubs of Lebanon

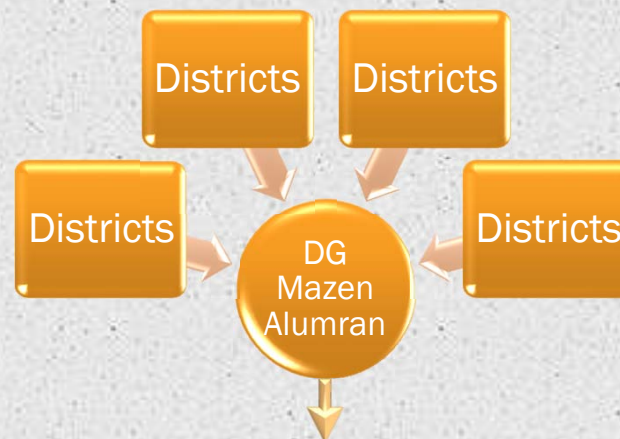
## Media & Image

- Social media
- Videos
- Online news
- TV interviews

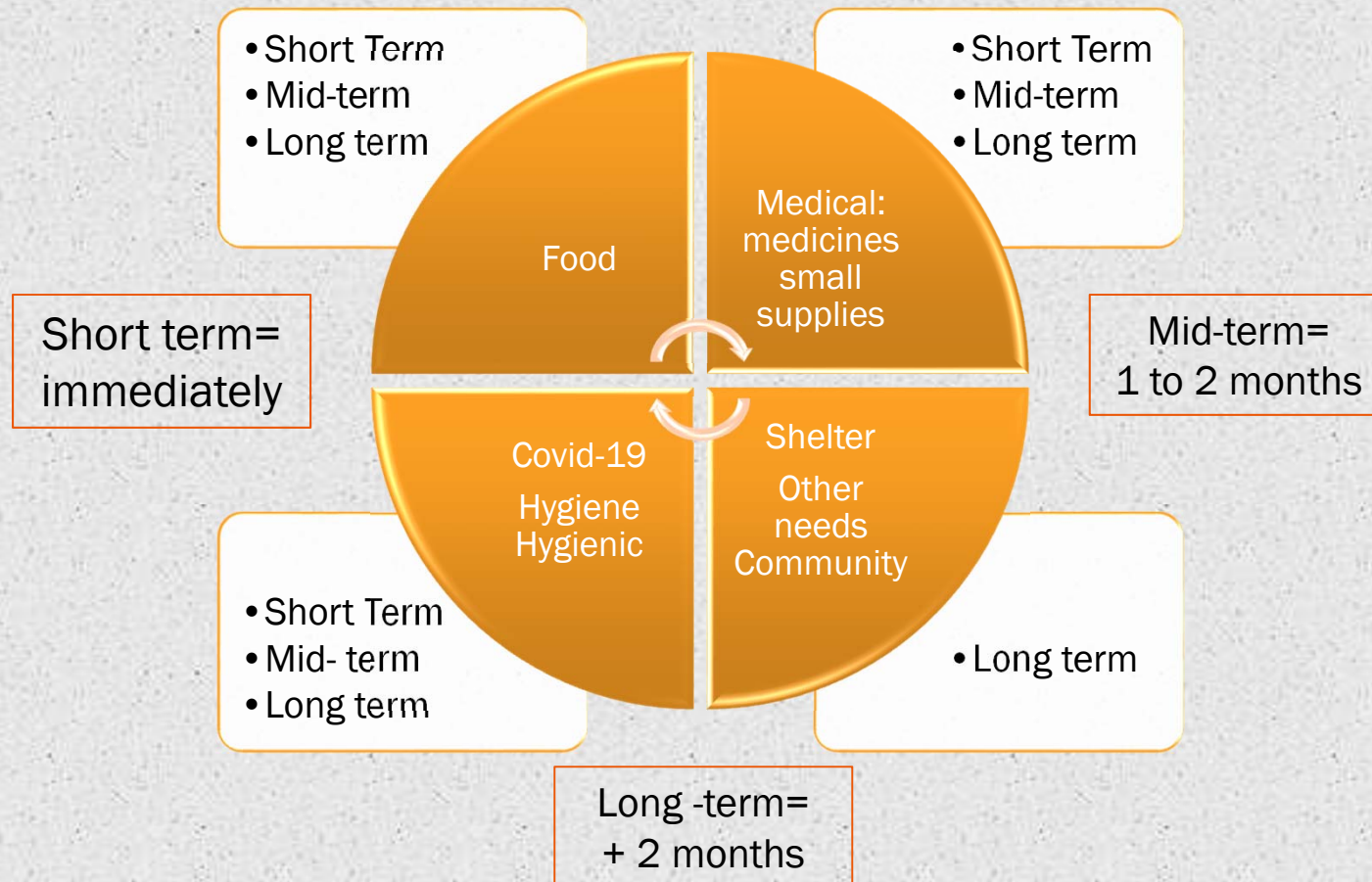


# Our Action Plan

## [Chain of Communication]



# Our Action Plan [Structure]



# Our Action Plan [Short Term]



Food  
Boxes

- For Families

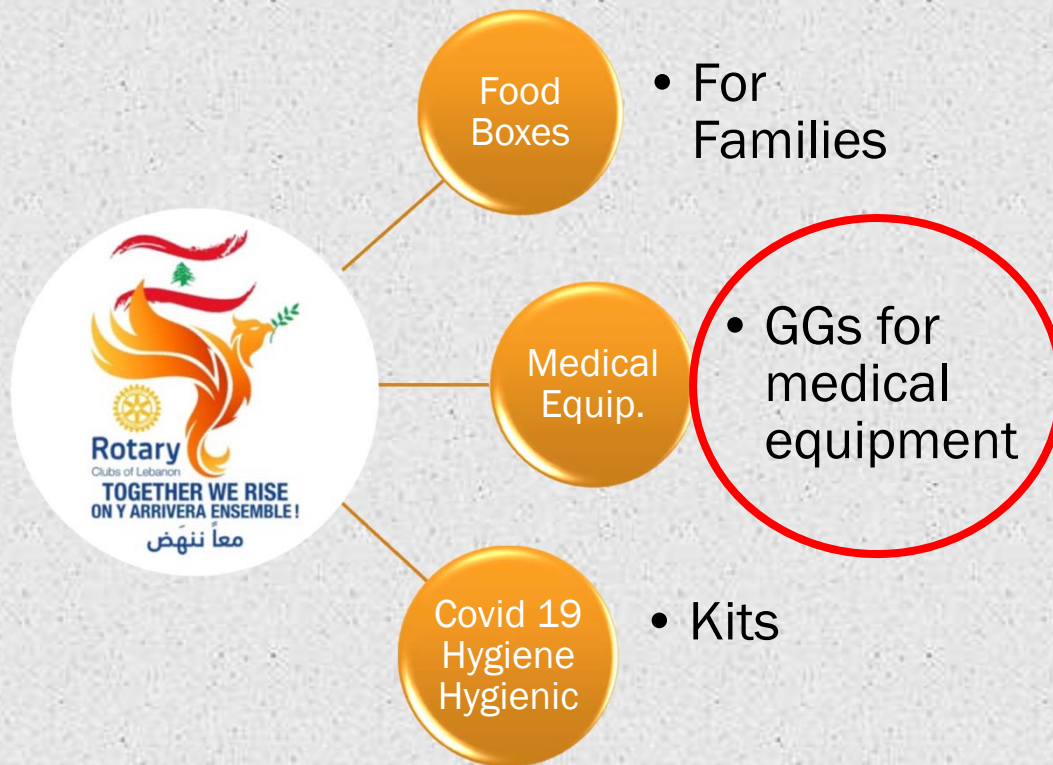
Medicines

- Basic Needs  
of Hospital &  
medical  
dispensaries

Covid 19  
Hygiene  
Hygienic

- Family Kits

# Our Action Plan [Mid Term]



# Our Action Plan [Long Term]



# Ways You Can Help

1. Through our **Bank Account** → Short/mid/long term. To finance projects Persons-to-Persons
2. **By Donations In Kind\_DIK** [through your embassy in Beirut] → short term → Persons-to-Persons
1. **By Global Grants** through your District Designated Fund\_DDF [only DDF is matched 100% by W.F.]. Have the approval of your DG and DRFC.
3. **Exposure** (Social Media)  
The Beirut Relief Initiative is on social media platforms. Please tag your friends

# Ways You Can Help-1

## ◌ Through our Bank Account

Bank: Bank Audi SAL

Branch: Bab Idriss

City: Beirut

Country: Lebanon

Swift code: AUDBLBBX

Beneficiary: ROTARY ASSOCIATION - LEBANON.

Beneficiary's address (required for international transfers): Gedco Center, Horsh Tabet, Sin el Fil, Beirut, Lebanon.

IBAN: LB06 0056 0000 0000 0084 1200 0024

# Ways You Can Help-2

**By Donations In Kind\_DIK →**  
through your embassy in Beirut]

## Ways You Can Help-3

**By Global Grants** through your District Designated Fund\_DDF  
→ only DDF is matched 100% by W.F.

Get the approval of the DG and DRFC.

# Ways You Can Help-4

## **Exposure** (Social Media)

The Rotary - Beirut Disaster Relief initiative is on social media platforms. Please tag your friends



<https://www.facebook.com/Rotary-Beirut-Disaster-Relief-113078983854631/>



[https://www.instagram.com/rotary\\_beirut\\_disaster\\_relief/?hl=en](https://www.instagram.com/rotary_beirut_disaster_relief/?hl=en)



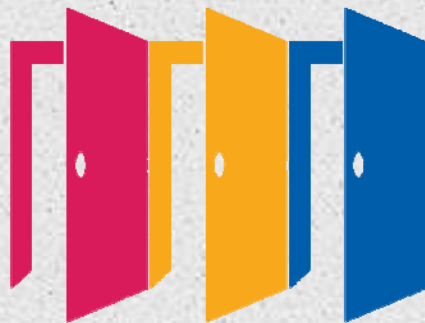
<https://youtu.be/1CFyl77WHNE>

# Testimonial

## RC HUM

- o GG in favor of Saint-George Hospital in Beirut and its relation with late President of RC Hammana Upper Metn\_HUM Antoine Barmaky who passed away in that hospital the day of the Beirut Blas on 4 August 2020, 18:07.
- o GG consists of having new equipment for new unit of delivery and nursery for the amount of 80.000 USD. We need support of DDF-Districts for 40.000USD.

# Thank you



Rotary Opens Opportunities



**Rotary**

Clubs of Lebanon

**TOGETHER WE RISE  
ON Y ARRIVERA ENSEMBLE !**

معاً ننهض

